

MyEclipse Blue Edition

MyEclipse Webinar Series

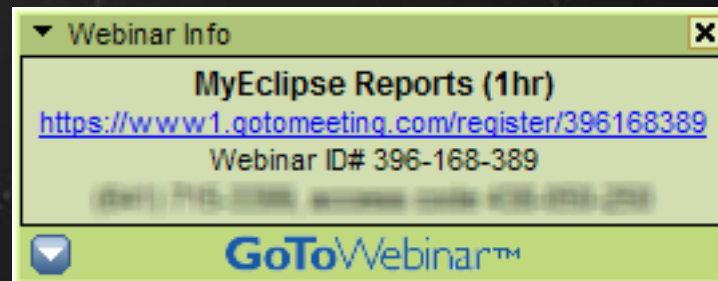
Conference Call: (605) 772-3434

Access Code: 225-607-600

Call-in Audio Only...

- You must call in to the conference phone # to hear us.
- The conference number is in the **Webinar Info** panel on the right hand side of your screen:

Example Screenshot



NOTE: The contact info above is just an example.
Please see your own screen for the correct information.

Asking a Question...

During the Webinar (Question & Answer Box)

Question	Asker
----------	-------

Purchasing Questions

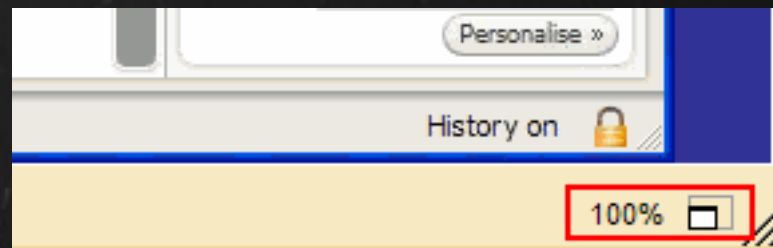
demos@myeclipseide.com

Support Questions

<http://www.myeclipseide.com/support.html>

Watching the Webinar...

If you have a hard time seeing my window during the presentation (e.g. it appears too large) you can use the "Zoom" functionality on the bottom right hand corner of the screen to adjust how it fits your screen.



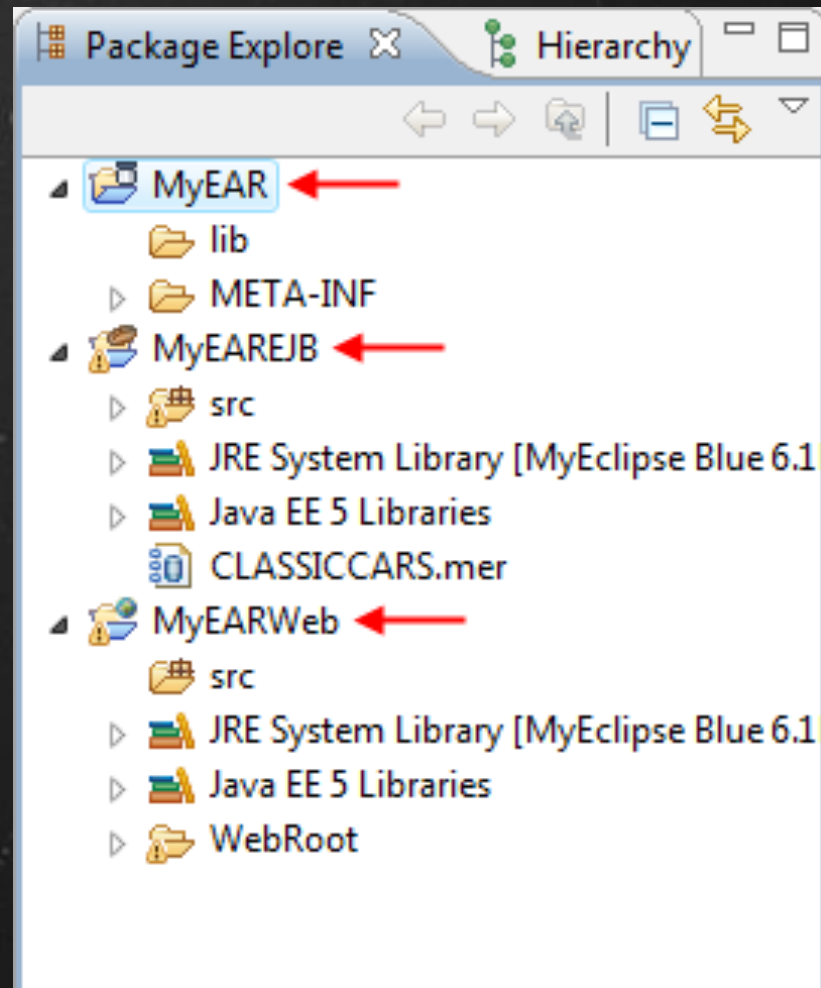
MyEclipse? Genui-who?!

- Nearly 10 million downloads
- 80% of Fortune 100 companies
- Over 500,000 users
- 16,000 enterprises
- 150 countries
- MyEclipse 1st Release in 2003

What is MyEclipse Blue Edition?

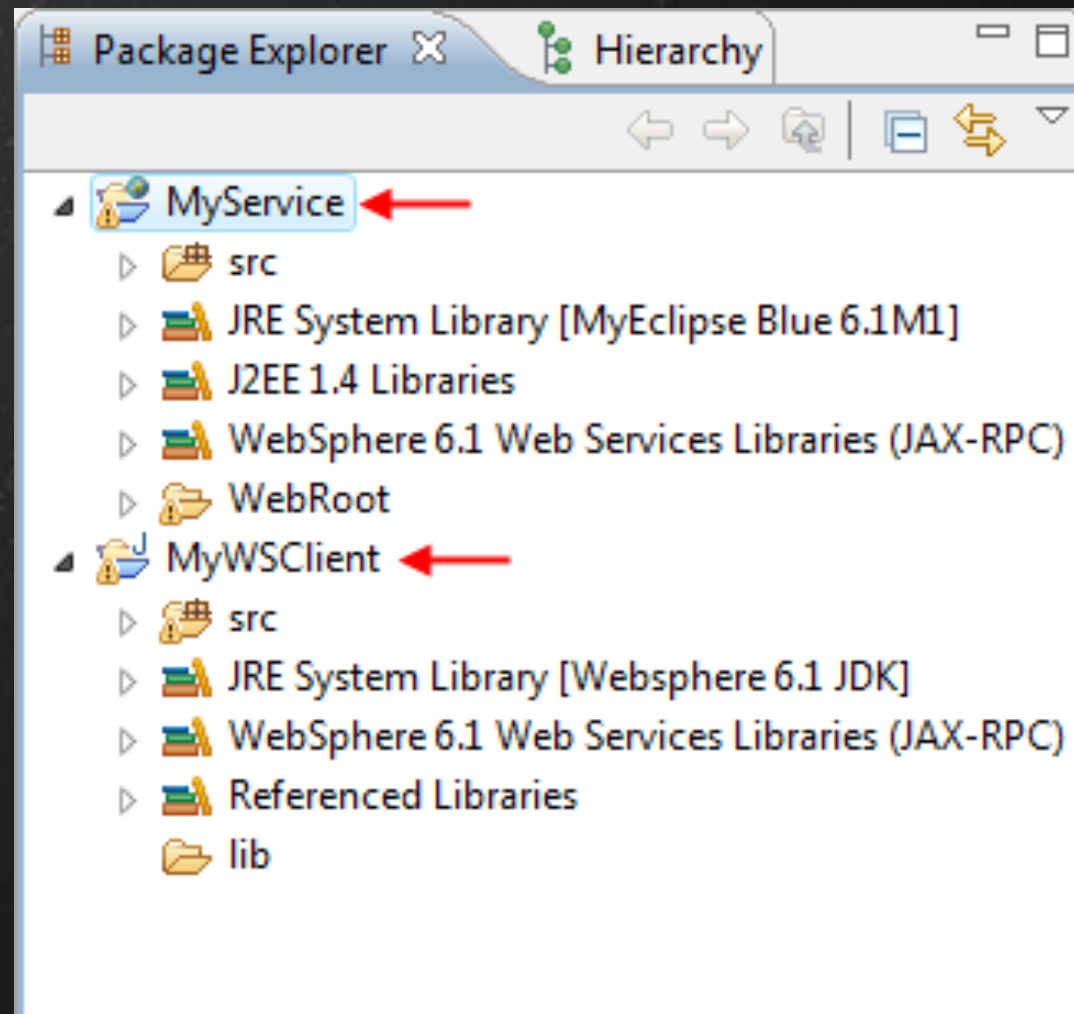
- **Low-Cost** Alternative for IBM RAD
 - IBM RAD Project Migration Support
- Supports **WebSphere** Platform
 - WebSphere 5.1, 6.0 and 6.1
 - JAX-WS, EJB 3, JAX-RPC, EJB 2.1 and more...
 - Advanced Server Deployment Integration
- **ClearCase** Support
- Supports Powerful **3rd Party** Libraries
 - Spring, Hibernate, Struts, JSF, JPA, XFire and more...
- Everything in **MyEclipse Pro**
 - Swing GUI Design, Enterprise Reporting, UML and more...
- **\$149.95**

Part 1: Java EE 5



(Part 1: Switch to MyEclipse Blue)

Part 2: J2EE 1.4



(Part 2: Switch to MyEclipse Blue)

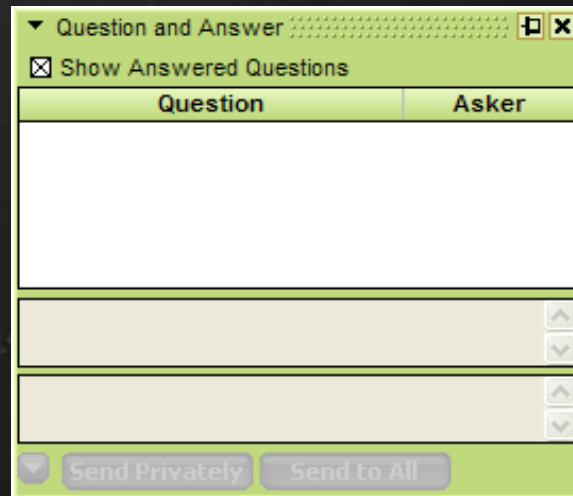
Gimme Blue!

- Free until mid-March GA release
- \$149.95 per developer
- Existing MyEclipse Users
 - Upgrade Options Available
 - Pro-rated Rates

Questions? subscriptions@myeclipseide.com

Questions & Answers

Feel free to ask any questions you had during the presentation...



A screenshot of a software window titled "Question and Answer". The window has a green header bar with a dropdown arrow, a close button (X), and a checked checkbox labeled "Show Answered Questions". Below the header is a table with two columns: "Question" and "Asker". The table body is currently empty. Below the table are two scrollable areas, each with a light beige background and a vertical scrollbar on the right. At the bottom of the window, there are two buttons: "Send Privately" and "Send to All".

Question	Asker
----------	-------

Upcoming Webinars...

- **Pulse** (3/13/08, 1pm CST)

- Pulse is provisioning software that allows the installation and management of collections of software called "profiles" across individuals, teams or the enterprise.
- <http://www.poweredbypulse.com>

- **MyEclipse Blue Edition Advanced** (4/24/08, 1pm CST)

- Covers enterprise development with MyEclipse Blue in detail

<http://www.myeclipseide.com/webinars.html>

Free Blue Subscriptions

You will be sent your **free subscription mid-March** along with the GA release of MyEclipse Blue Edition

Conclusion

Thank you for joining us.

MyEclipse Webinar Registration page will be updated as we plan for future webinars. Be sure to check it out.

<http://www.myeclipseide.com/webinars.html>

If you have questions about our webinars you can email us at demos@myeclipseide.com